

ANNUAL REPORT
2023



Transformations



Our Mission

The Elizabeth Fry Society of Greater Vancouver (EFry) is a charitable organization that supports some of society's most vulnerable populations — women, girls and children at risk, involved in or affected by the justice system. Our more than two dozen programs work to break the cycle of poverty, addiction, mental illness, homelessness and crime.

BOARD OF DIRECTORS

Clare Mochrie - Chair
Jody Bourgeau
Jessica Dickson
Genesa Greening
Azra Hussain
Brenda Knights
Robert MacDougall
Taheer Mohammed
Kas Pavanantharajah
Lynn Pelletier
Susan Witter

OUR FUNDERS

BC Association of Pregnancy
Outreach Programs
BC Corrections
BC Housing
City of Surrey
Canadian Mental Health Association
Community Living British Columbia
Correctional Services Canada
Department of Public Safety and
Emergency Preparedness, Canada
Fraser Health Authority
Law Foundation of British Columbia
Ministry of Social Development &
Poverty Reduction
Provincial Health Services Authority
Rideau Hall Foundation
Reaching Home Canada's
Homelessness Strategy
Women and Gender
Equality Canada

CLIENTS SERVED

We served
12,689 clients,
of which **1,851**
were children.

THANK YOU TO OUR VOLUNTEERS!

134 volunteers gave
12,744 hours of
support to EFry and
our clients. We are
grateful for all you do
to make many of our
services possible.



Transforming Lives



A Message from EFry's Board Chair

The theme of this year's annual report is *Transformations*. It is a theme that captures the work of EFry staff and the outcomes of EFry's programs and services, which continually evolve to support positive transformations in our clients' lives. In addition, this year has seen some particularly significant milestones for EFry. With the opening of our Rosewood building in Surrey last September, EFry added affordable, permanent housing to our offerings. We also opened our largest shelter in Surrey to provide inclusive and culturally safe transitional housing for women and children.

With COVID shifting to endemic status, many aspects of normal life resumed in our communities; however, we also experienced the sixth year of the toxic drug public health emergency. As an essential service, EFry was one of the few organizations that not only remained open for in-person supports throughout the pandemic, but grew to meet enhanced need created by these concurrent crises. Our staff and volunteers, particularly those on the front lines, have continued to work exceptionally hard under challenging circumstances. I have been humbled by their dedication and on behalf of the board, I thank the EFry team for consistently going above and beyond to support our clients.

This year also saw the retirement of EFry's longtime CEO, Shawn Bayes. The board conducted a national search for her successor and have been pleased to welcome Alison Dantas to lead EFry.

The board shares a sense of optimism around the year to come and the transformative work that lies ahead. We acknowledge the support of our many partners in this work. As always, EFry is also deeply grateful to the donors and volunteers who make so much of what we do possible.

Clare Mochrie
Board Chair



A Message from EFry's CEO

It is my great pleasure to have joined EFry as CEO in July. This is such an impactful, unique organization. By providing a connected continuum of supports to vulnerable women and their children, EFry truly meets women where they are, and helps them address the challenges they face and work towards achieving personal goals for the lives they want.

For me, becoming part of EFry has been like coming home. I began my career with a women's charity, supporting those fleeing violence and seeking a safe, stable future. I have seen the strength and resilience of women in overcoming the most difficult of circumstances. By providing women with the tools and opportunity to address their challenges, supports like those EFry offers can be truly life-changing.

As I learn and hear the experience of staff, volunteers and clients, I feel certain that EFry will continue to be a beacon for our clients and the communities we serve. Our deeply rooted history as an organization is to rise to meet the evolving challenges that face vulnerable women and their families. In Canada, women and in particular, single-mother led families, make up the bulk of the poorest Canadians. Issues such as the lack of affordable housing, significant increases in the costs of living, and barriers to accessing health care have the greatest impact on those we serve. Both in terms of advocacy and programming, EFry will continue seek out gaps in supports and strive to see them filled.

I thank EFry's board, staff, volunteers and supporters for the warm welcome, and look forward to advancing EFry's mission together.

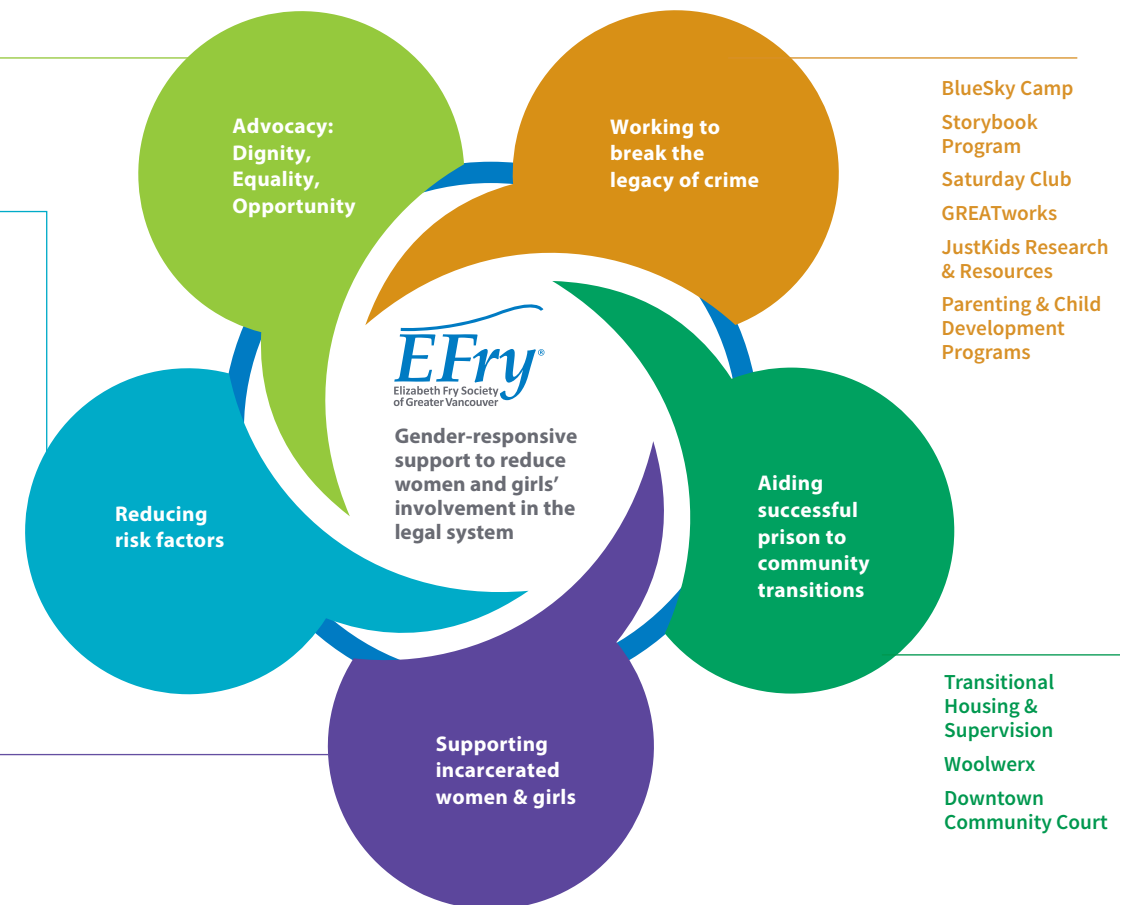
Alison Dantas
CEO, EFry

EFry's Theory of Change and interconnected continuum of programs and services were created to assist women in rebuilding their lives by providing them and their children with access to a customized combination of supports.

Poverty Law Clinic
Future Bright
PathwaysNotPrisons.ca

Shelters & Housing
Support Exiting Sex Industries
Substance-Use Treatment
Intensive Case Management For Chronic Homelessness
Maida Duncan Drop-In Centre
Third Party Administration
Individual & Family Counselling

Mother-Child Prison Programs
Prison Volunteer Programs



BlueSky Camp
Storybook Program
Saturday Club
GREATworks
JustKids Research & Resources
Parenting & Child Development Programs

Transitional Housing & Supervision
Woolwerx
Downtown Community Court

A Legacy of Transformational Leadership

In May, our longtime CEO, Shawn Bayes, retired. Over the course of her 38-year career with EFry, Shawn's unwavering dedication to supporting criminalized and marginalized women in building brighter futures for themselves and their children helped changed countless lives, both directly through EFry's programs and services, and also provincially, federally and internationally through her leadership in EFry's advocacy for systemic change.



Under Shawn's leadership, EFry's mandate evolved from focusing on serving incarcerated women and those transitioning back to the community, to include programs and services that help vulnerable women and children avoid coming into conflict with the law in the first place. These programs now form the majority of our offerings. After discovering children of incarcerated parents as an unsupported, highly marginalized group in Canada, Shawn created JustKids, the country's first and only suite of programs, research and advocacy aimed at reducing the dire impact of parental incarceration, which is also a key focus of EFry's work.

Shawn dedicated her career to enabling transformational change. We thank you, Shawn, for your tremendous leadership and wish you a wonderful and well-deserved retirement.

New Westminster Mayor Patrick Johnstone presents Shawn with the proclamation of her last day with EFry as Shawn Bayes Day in the City of New Westminster, the first time in the city's history a day was named in a person's honour.

Looking Ahead: Celebrating 85 Years of EFry

Founded in 1939, generations of 'Fryettes' have been inspired by the resilience and transformational changes achieved by our clients. Much has changed in the past eight decades, but the power of women to overcome challenges and build brighter futures for themselves and their children has not. In the coming year, we hope you will join with us as we celebrate our 85th anniversary of pursuing Dignity, Equality and Opportunity for vulnerable and criminalized women and their families.



Transformations to...Life Free of Conflict with the Law



Pardon Me

A criminal record can be a significant barrier to finding a job and stable housing. While some older records can qualify for suspension (also known as a pardon), the process can be complex and expensive. In early February, we launched Pardon Me, a free program to help qualifying clients navigate and afford the steps involved in having their record suspended. This popular program supported 35 people in the first two months, with demand rapidly growing.

Courthouse Navigation

Surrey is B.C.'s busiest court for women. It can be confusing, so our team helps women navigate the process, connects them with advocates and community resources, and ensures they understand how to pursue alternatives to incarceration. We supported 42 women at the Surrey Court this year.

EFry also provides navigation support at the Downtown Community Court, where volunteers help clients struggling with homelessness, mental health needs or substance use. This program served 502 clients this year.

Poverty Law Clinic

EFry's law clinic provided free support to clients living in poverty. This year, we supported 758 people with challenges related to income security, housing, debt and accessing government benefits. The law clinic also provided referrals to those experiencing family conflict, child protection, and employment.



We supported 502 clients in navigating the Downtown Community Court this year.

Transformations to...Housing Stability and Healthy Futures

Having a safe, stable place to call home is the foundation on which healthy lives are built. It has always been an area of struggle for many of our clients, whether they are transitioning back to the community from prison, escaping a challenging living environment, dealing with substance use or mental health needs, or experiencing homelessness.

EFry provided women and children with **29,421 bed nights** in our shelters.

DRAMATIC INCREASE IN HOMELESS CHILDREN
EFry shelters saw a **65% increase** in child clients this year.



Shelters

EFry operates four shelters, all of which now accept children due to sustained, sharp increases in demand from homeless families in recent years. Last fall, we replaced the hotel-based shelter programs we operated during the pandemic, with our new purpose-built shelter space in Surrey's new Rosewood building. In total, EFry's shelters supported 643 clients, a 14% increase from 2022. At 307, nearly half of those clients were children, a jump of 66% in a single year.

Supportive Housing

EFry's two supportive housing programs provide women who need substance use, mental health or life skills support with individualized case management as well as transitional housing. When they are ready for independent living, we support them in finding stable, affordable housing. Mazarine Lodge offers 44 bedrooms and Legacy Manor has 37. This year, 95 women participated in these programs.

EFry Opens the Doors to Permanent Affordable Housing

With our region's housing crisis, we have increasingly seen affordability issues lead to significant jumps in homelessness for women who did not traditionally struggle with housing. As a result, we see a greater polarization in the ages of our clients, with more seniors and single mother-led families needing housing support than ever before. EFry has responded by adding affordable apartments to our service offerings. Funded by BC Housing, our Rosewood Apartments introduced 57 stable, affordable housing units this year, 15 of which are operated by the Fraser Region Aboriginal Friendship Centre Association.

In Burnaby, construction is nearly complete on the Anna Buxton Apartments, a 49-unit rapid housing development that will provide homes for women and single mother-led families who are homeless or at risk of homelessness. These permanent homes represent a collaborative effort with all levels of government.

EFry supported **517 clients** in securing permanent housing across all programs, a **33% increase** over last year.

Reaching Home

EFry's Reaching Home programs support women and women with children who are experiencing extended or repeated periods of homelessness in securing safe, stable housing. This year, we added new Reaching Home initiatives in Abbotsford and Victoria, which found homes for 127 clients. In all, EFry operates four Reaching Home programs, which together assisted 928 clients this year, 319 of which were children.



Substance Use Recovery Programs

In December, EFry introduced a new bed-based, specialized substance use treatment program, Sequoia at Firth Residence. Welcoming clients from throughout BC, it offers an enhanced staffing model that includes a concurrent disorders clinician, a robust medical team and an Elder for Indigenous cultural support. It served 10 women in the first three months of operation. The addition of Sequoia to EFry's suite of substance use programs allows for an increased continuum of care to meet women's varying needs.

Rosedale, an intensive bed-based treatment program, served 32 women during the year. Ellendale, a supported bed-based program, served 43 women. Through Ellendale Cradle and Transitions to New Beginnings, EFry provides supported recovery programs that enable women who are pregnant or newly parenting to receive treatment while keeping their children with them. Families were also able to participate in Growing Great Kids parenting and child development programming. Together, these programs supported 20 women and 15 children.

Virtual Counselling

To make counselling support more accessible to women across BC, EFry provides virtual clinical counselling at no cost to clients. This approach removes barriers to accessing professional support to address a range of mental health concerns and support wellness. This year, we served 111 clients.



Transitions to...Brighter Futures

JustKids is EFry's umbrella of specialized programming, research and advocacy created to mitigate the lifelong and legacy impacts of parental incarceration, homelessness and substance use challenges.



Through a connected continuum of programs, JustKids supports kids at every age, promoting:

- Healthy child development
- Parenting skills & family bonding
- Access to stable housing support for families
- Positive peer relationships
- Self-esteem, resiliency & life skills
- Literacy, and
- High school completion & post-graduation education.



Blue Sky Summer Camp

Always a favourite of our child and youth clients, EFry welcomed 51 campers aged six through 17, to our junior and senior sessions this summer. Campers enjoyed a variety of local outings and classic summer activities.

Small Frys Toy Bank

To ensure every child client receives a holiday gift, EFry operates the Small Frys Toy Bank. Mothers and guardians 'shop' new age-appropriate gifts for newborns through teens to select the perfect fit. We thank Granville Island Kids Market for once again collecting gifts for our clients through the Wishing Tree, and the Deloitte and Purposely teams for their support in getting this year's toy bank ready for shoppers. 203 children received gifts through the toy bank this year.

Supporting the Consideration of Child Rights in Parental Sentencing

Parental incarceration, particularly maternal incarceration, has a lasting negative impact on children, yet their welfare is not always taken into account during sentencing. To help, EFry, and the Canadian Coalition for Children with Incarcerated Parents contributed to the development of the International Centre for Criminal Law Reform and Criminal Justice's guide, *Considering the Best Interests of the Child in Sentencing and Other Decisions Concerning Parents Facing Criminal Sanctions: An Overview for Practitioners*.

Future Bright

This year, EFry helped expand the reach of Future Bright, a free program that supports parents and guardians in setting up no-cost RESPs for their child so they can claim up to \$3,200 in government grants to fund education and training after high school. This year, 107 children were registered for RESPs and the Canada Learning Bond through Future Bright.

Growing Great Kids

Growing Great Kids provides parenting and child development support for kids up to age six. To enhance accessibility, this program is offered to both incarcerated and community-based clients. This year, we supported 19 incarcerated mothers and 2 babies, as well as 19 community-based mothers and 36 children this year.

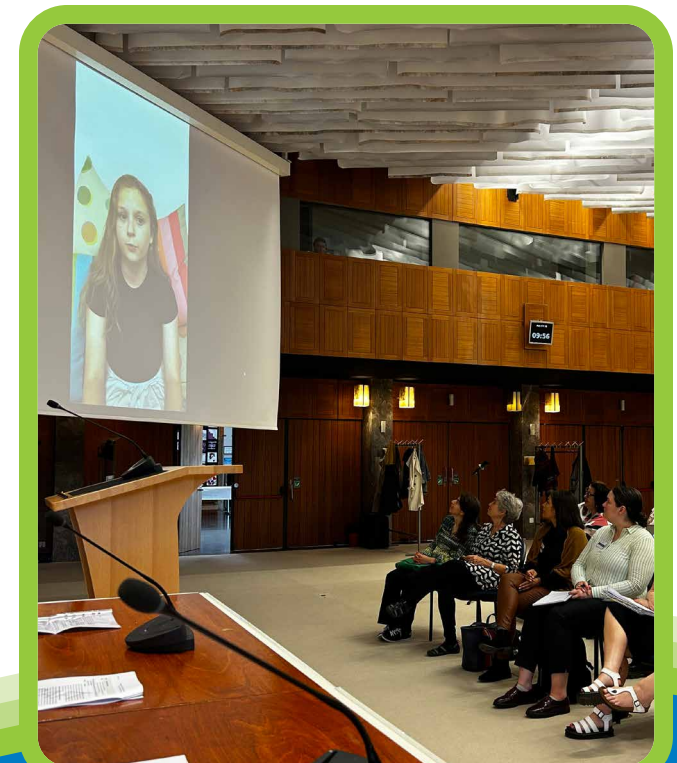
"In a world where all children's rights were respected, minority groups of children such as LGBTQ+ and those with disabilities would have access to support groups and the tools for equity. Additionally, children of incarcerated parents would have the support they need to have easy and regular access to their parents."

– FREJA KLAUSEN

International Advocacy for Child Rights



EFry is the Canadian member of Child Rights Connect, a collaborative international body advising the United Nations on matters of child rights. This year, we nominated 13-year-old Freja Klausen to represent Canada on its Children's Advisory Team.



EFry's Child Advocate, Freja Klausen, in a video shared at Child Rights Connect's 40th anniversary conference in Geneva, Switzerland.

Enabling Transformations... Our Volunteers

Since EFry's inception in 1939 by a group of passionate volunteers, many of our supports have been made possible thanks to those who donate their time to work with our clients. While our community-based initiatives continued throughout COVID, prisons suspended their volunteer programs for two years. It was welcome news for both our clients and the dedicated volunteers who connect with them, when we were permitted to resume in-prison programming this year.

Volunteer Voice – Amelia, Storybook Program

Prior to her retirement, Amelia was a counsellor who worked with women fleeing violence. She also supported incarcerated youth and volunteered in the library of a men's prison.

"I discovered EFry in 2008," says Amelia. "I'd moved to Maple Ridge the year before and because of my experience with working in prison, I investigated opportunities to volunteer at Alouette Correctional Centre for Women. EFry had openings for the cardmaking program, so I started doing that in the fall."

Amelia enjoyed doing crafts with the women. Her enthusiasm led to EFry asking if she'd be interested in training for a new initiative, the Storybook Program. In this role, she recorded mothers reading books they selected for their children. To promote both parent-child bonding and literacy, the books and recordings are then sent to their children so the two can share stories.

"I had a daughter and daughters-in-law who were about the Mums' ages and grandchildren, which made it easy to connect with them," continues Amelia. "It's such a great program. I really believe in having programs for women in the justice system and this benefits kids too, so it's a double-whammy."

"The women really appreciate it and some get really emotional. It's such a good, positive thing for them."

Amelia was eager to resume her volunteer work after the COVID closures. "I know the women were asking for it. It's good to be back."

Thank you, Amelia!



Amelia has generously volunteered her time to EFry programs like Storybook for 15 years. Once COVID restrictions were lifted this year, the Storybook Program was able to resume and served 22 children.

We had
5,844 client visits to our drop-in centre this year, 407 which were by children

Maida Duncan Drop-in

Powered by Volunteers

Women enjoy a safe space to connect, have a snack or shower, and access programming. Volunteers like Viviana make this popular drop-in centre possible.



Transitions to...Stable Employment



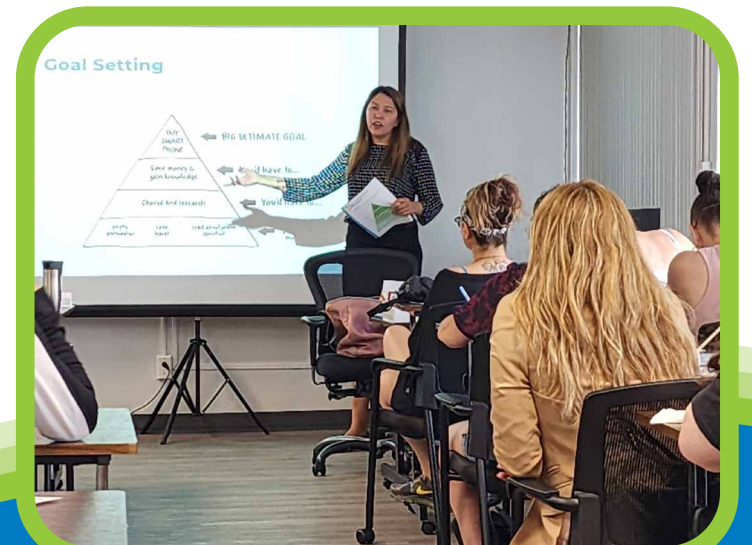
Woolwerx

EFry's social enterprise, Woolwerx, provides women re-establishing their lives in the community with training and employment. Using donated waste wool, the women create a suite of artisanal wools, yarns and fleece products which are sold online through our Esty store and at craft fairs throughout the Lower Mainland. This year, our Wonder Wool Gardening Pellets expanded to national distribution via an exclusive arrangement with West Coast Seeds. Woolwerx provided women with 3,724 hours of employment and processed 142 pounds of fleece.

STEPS to Employment and Education

Our STEPS program helps women and girls aged 15-29 access education, training and employment. This year, 38 people took part in the program. Among the most popular career choices participants choose to pursue education for include community support workers and care aides, citing a desire to give back to others.

In partnership with Junior Achievement, STEPS operated two popular workshops: *Economics for Success* and *Personal Finance*.



STEPS clients take part in a workshop on Personal Finance presented by Junior Achievement.



CLIENT VOICES:

"Woolwerx has given me a feeling of empowerment, financial independence and a sense of freedom."

– WOOLWERX ARTISAN

Thank you...

...to all our donors for your generous support.

Circle of Joy \$50,000 <

Al Roadburg Foundation
Allen and Linda Tuningley
Mr. and Mrs. P.A. Woodward
Foundation

Circle of Renewal \$25,000 < \$49,999

Lea Galloway
Jerry Luking
Nancy A. Olson

Circle of Integrity \$10,000 < \$24,999

Charitable Impact
Foundation (Chimp)

Circle of Empowerment \$5,000 < \$9,999

Byram Family Foundation
Gordon Mackenzie
Lilli M. Luking
Makeway Foundation
Shoppers Drug Mart Charity
Save-on Foods, Sapperton
Synergy Collective Society

Circle of Love \$2,500 < \$4,999

Shannon Gordon
Gillian Ickert
Orbis Investments (Canada)
Limited
Remembering Otto and
Marie Pick Charitable
Foundation
Soroptimist International
of White Rock
Jeffrey Wadge
Yitung Buddhist Temple

Circle of Wellbeing \$1,000 < \$2,499

Hinda Avery
Conni Bagnall
Elizabeth Burrell
Gregory Deans
Sue Diewert
Greg Doucette
Howard Eaton
Libby Dybikowski
Gateway Casinos and
Entertainment Limited
Charles and Lucile Flavelle
Family Fund
Carol J. Gibson
Nicola Hands
Azra Hussain
Ina Jamtani

Kao Canada Inc.
KidsBooks
Julia Kindrachuk
Spenser Lum
David Maclean
Felix Y. Manalo
Foundation Inc
Sandra Micheals
Beverly Mitchell
Clare Mochrie
Pamela A. Ottridge
RDH Building Science Inc.
St. Mary's Anglican
Church Kerrisdale
Starbucks Foundation
Silverorange Inc.
Tradewind Books
Carol Viau
The Victoria Foundation
Susan Witter

Circle of Healing \$500 < \$999

Anonymous (Canada Helps)
Karen Alvarez
Jen Anthony
Marilou Appleby
Anna Bertoia
Frances Bickerstaff
Elizabeth Burrell
Coquitlam Public Libray
Adele Diamond
Alexandra Diebel
Jessica Dickson
Deirdre Evans
Brent Fast
Lisa Friesen
Gulf & Fraser Fishermans
Credit Union
Robert Hargreaves
Robin Hilliard
Randle D. Knill
Deborah Loyd
Catherine Nelson
Mary L. MacDonald
Mattress Choice
Jennifer Miller
Kas Pavanantharajah
Sarah Rossiter
Surrey District School Board
Patricia Sayer
Kelly Sawatzky
Sons of Norway Foundation
in Canada
United Way of British
Columbia

United Way of Greater
Victoria & Southern
Vancouver Island

Vancity Community
Foundation
Ana Wagner
Miriam Webber
Barbara Westly

Circle of Caring \$200 < \$499

4 Anonymous
(Canada Helps)
Sigrid Albert
Haran Aruliah
Mairy Beam
Beans and Greens Cafe
Luis Gomez Belmonte
Raelene Christman
Rebecca Crowe
Maria Dutra
Denise Taylor Ellis
Norman and Cheryl
Filipenko
Andrea Glen
Yvonne Grue
Jeanine Harper
Geoff Jones
David Kean
Camie Kim
Jessica Knott
Aaron Kumar
Ade Larsen
Dinah Leom
Nicole Lee
Deborah Ling
Patrick Livolsi
Maureen McGonigal
Simone Mackenzie
John Manson
Kirsty Maxwell
Irene Ostrowercha
Linda Pavan
Erika Plett
Christina Pook
John Robb
Alexander Roberts
Angela Steininger
Rhiannon Satherley
Tish Silvers
Christine Sommers
Charles John Stewart
Joanne Thember
Don Yuzak

Circle of Sharing \$100 < \$199

Devlin Avery
Benevity Community
Impact Fund
Barbara Bowes
Ian and Jean Campbell
Shauna Campbell
Vienne Chan
Pandora Cheung
Diane Cliffe
Barbara Cohen
Becky Desabrais
Helen Die
Cora Efrom
Susanna Egan
Shirley Giggey
Marlene Higgins
Julie Iannacone
Stephanie Joh
Christine L. Laborde
Mary L. Landell
Steve Leavitt
Fiona Lewis
Tamara Levy
Lauren Lyzenga
Tara McDiarmid
Robert MacDougall
Anne McIntyre
Duncan McLelland
Catherine Mori
Melinda Neil
Wayne Mullins
Dawn L. Nelson
Christine Nichols
Oxegen Yoga - New
Westminster
PayPal Giving Fund
Peninsula United
Church Women
Chloe Perrin
Dorothy Rogers
Bernice Rolls
Sapperton Residents
Association
Margaret Shaw
Elizabeth Smayda
Sandra Wilking
Jane and Philip Wilson
Marilyn D. Wilson
Roxanna Wong

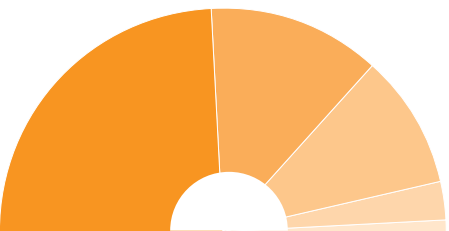
Circle of Support

10 Anonymous
(Canada Helps)
Laura Adams
Sara J. Allain
Azy Gift Baskets
Isobel Bodie
Gunreet Brar
Diane Bryden
Angela Chan
Carrie Chapman
Jennifer Eged
Mary Eggertson
Isabelle M. Forrer
Joanne Borg Galea
Jean Graham
Gail Harrison
Georgia Hoskins
Denise Hall
John Heddle
Jamee Justason
Camie Kim
Isabel Lamb
Ann Lo
Janet Matthews
Colin Murray
Evangeline McCarthy
Susan M. McKechnie
Margaret Miller
Kathleen Moore
Daphne Paterson
Provincial Employees
Community Services Fund
Kim Richards
Brin Rusborne
St. Andrews Pastoral Charge
Patricia M. Sing
Hannah Graham-Smith
Ljubica Skrepnik
Virginia Tupper
Angela Wachowich
Wendy Williams
Nolan Wagnan
Greg Witt
Therese Wright

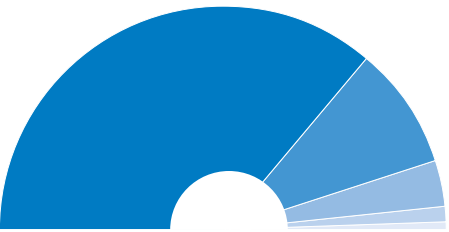


Financials

April 1, 2022 – March 31, 2023



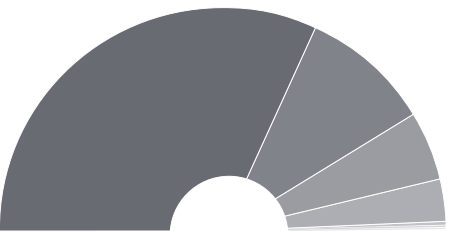
EXPENSES		\$ 19,479,851
Women at risk	\$	9,505,388
Families at risk	\$	4,846,097
Community justice	\$	3,744,721
Youth at risk	\$	1,068,934
Management and policy	\$	314,711



REVENUE		\$ 20,322,783
Provincial government contracted programs	\$	14,683,949
Federal government contracted programs	\$	3,646,311
Grants, donations, and other income	\$	1,404,977
Rental income	\$	434,001
Investment income	\$	153,545



ASSETS		\$ 43,759,828
Current assets	\$	33,903,971
Capital assets	\$	9,047,729
Investments held at fair value	\$	294,384
Prepaid rent	\$	286,914
Restricted cash	\$	218,752
Surplus in equity-accounted organization	\$	8,078



LIABILITIES & NET ASSETS		\$ 43,759,828
Deferred capital contributions	\$	28,163,038
Current liabilities	\$	8,230,213
Net Assets	\$	4,414,961
Long-term debt	\$	2,511,916
Deferred contributions	\$	379,342
Replacement reserve	\$	36,358
Deferred rent obligation	\$	24,000

Join Us!

Your support is what makes it possible for us to offer many of our programs. Our volunteers, staff and donors help put women and children on pathways out of poverty and onto the road to a brighter tomorrow.

EFry acknowledges the unceded and traditional lands of the 'stó:lō (Sto:lo) and Seabird peoples, the Skwxwú7mesh (Squamish), xʷməθkʷəy̓əm (Musqueam), səliłwətaɬ (Tsleil-Waututh), s̓cəwəθən (Tsawwassen), qiqéyt (Qayqayt), Kwantlen, Kwikwetlem and semi̓:mu (Semiahmoo) and our work on Vancouver Island on the unceded and traditional lands of the lək̓ʷəŋən People (Esquimalt and Songhees) First Nation.

